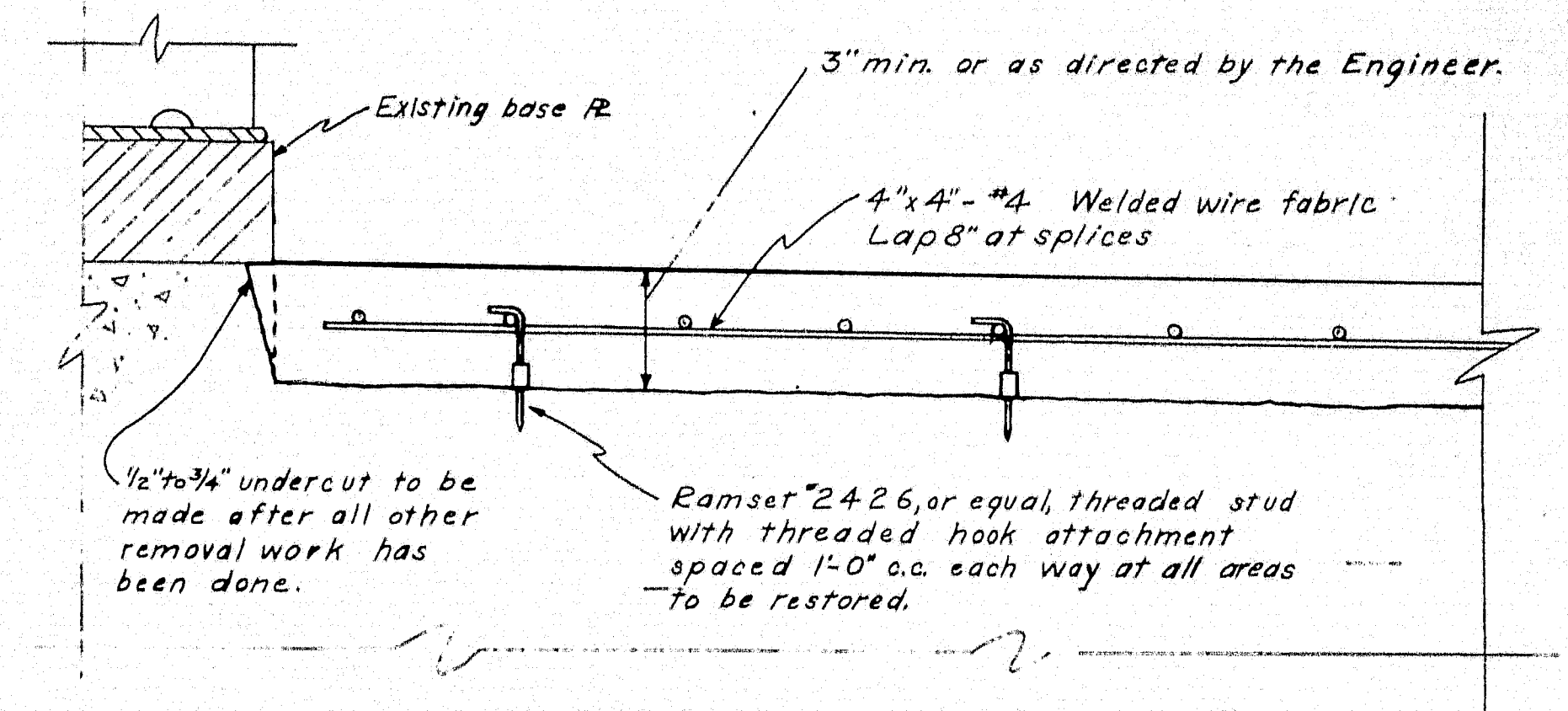
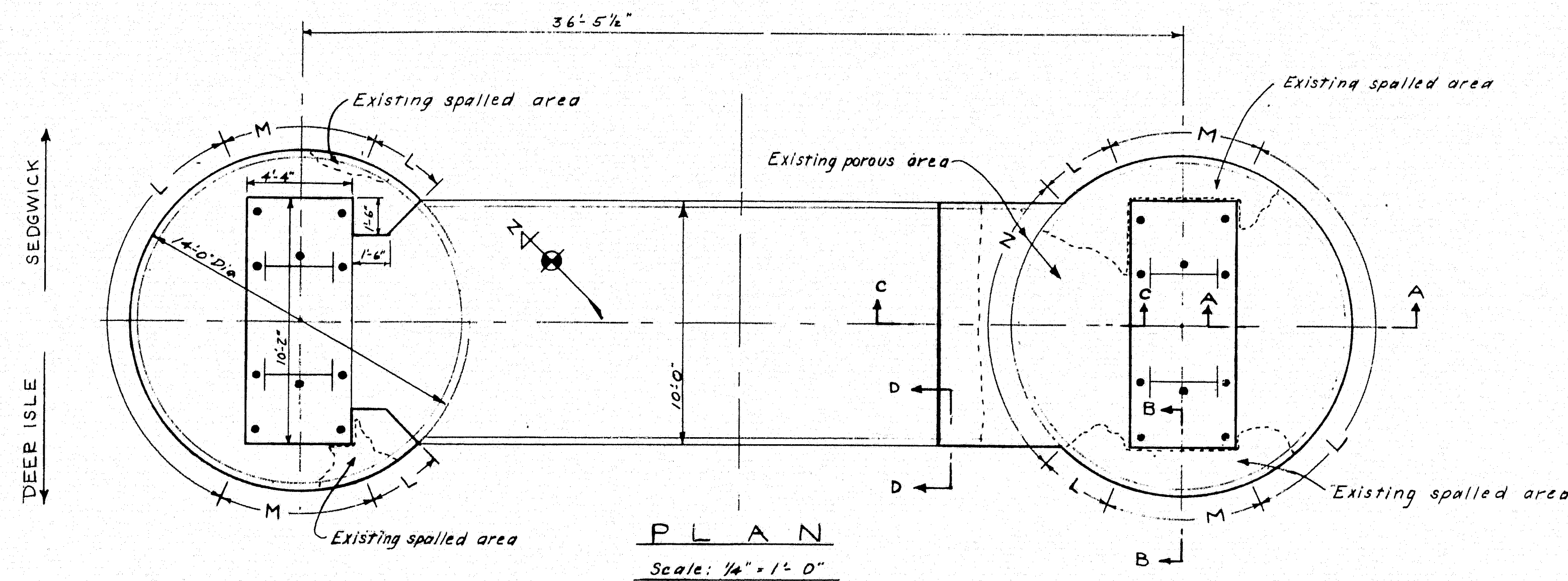
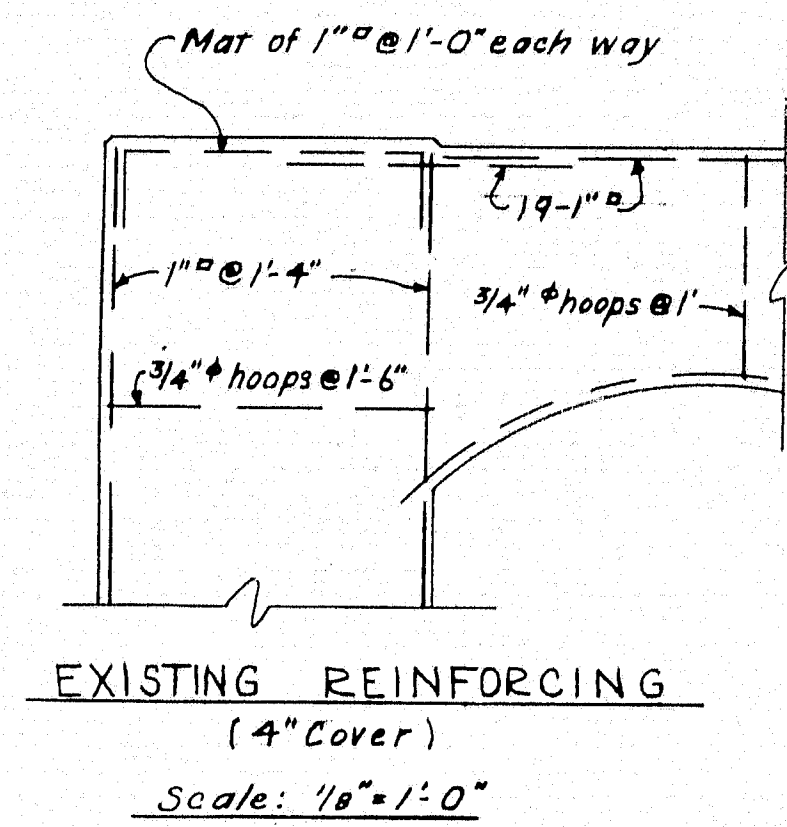
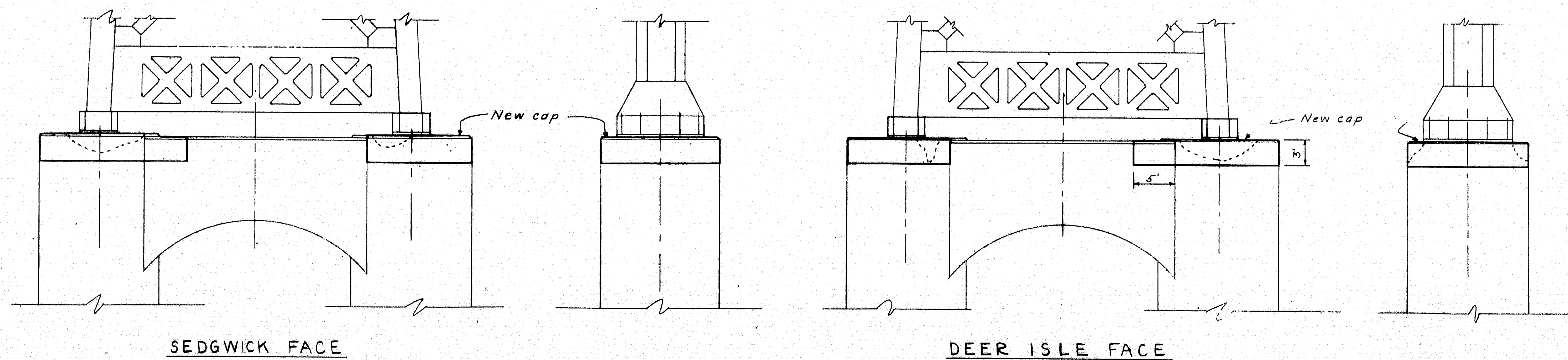


# SECTIONS Scale: 1/2" = 1'-0"



# DETAIL Scale: 3" = 1'-0"

NOTE:  
New steel to be securely fastened to any reinforcement exposed in the process of removing degenerated concrete.  
Concrete shall be Class Y.



# ELEVATIONS Scale: 1/8" = 1'-0"

D.B. STEINMAN CONSULTING ENGINEER NEW YORK, N.Y.	SCALE: AS NOTED DATE: MAY 17, 1956 DWG: 5517-1
DEER ISLE - SEDGWICK BRIDGE HANCOCK COUNTY, MAINE	
PIER 4 (SOUTH TOWER) - CAPS FOR CONCRETE SHAFTS	